



OREUS d.o.o za usluge  
Božidarevićeva 13  
10000 ZAGREB, CROATIA  
Tel: +385 1 2484286  
Fax: +385 1 2305775  
VAT: 00735106343

---



## Prerequisites and Installation



## Hardware and software prerequisites

Before you can start using the CubePlayer, you should ensure the proper hardware and software (server, workstation) platform is prepared and ready to be used.

The client machine should have at least 2.4 GHz CPU with at least 512 MB of RAM, a good graphic card and a display device (typically a 18-20 inch LCD) capable of showing the 1280x1024 resolution or better.

### Important note

The version of the SQL Server Service Pack must be exactly the same on both server and client machine! Failing to comply with this requirement may result in inability to see any cubes on the OLAP server.

## Installing and registering CubePlayer

All CubePlayer installations use the Windows Installer technology (version 3.1). If you do not have it you can find it inside package.

After unpacking you will see files:

Name	Size	Type
Autorun		File Folder
CubePlayer20		File Folder
CubePlayer Licence		File Folder
Installation instructions		File Folder
Start_files		File Folder
Windows Installer		File Folder
Autorun.inf	1 KB	Setup Information
CubePlayer20.ini	2 KB	Configuration Settings
CubePlayer20.msi	78.904 KB	Windows Installer P...
dotnetfx.exe	22.960 KB	Application
instmsiw.exe	1.780 KB	Application
Readme.doc	257 KB	Microsoft Word Doc...
Setup.exe	193 KB	Application
Start.htm	48 KB	HTML Document

**To install Cube Player\_x64 install manually by this order:**

1. MSXML\_6\_x64
2. ASOLEDB\_10\_x64
3. ADOMD x64, and then run
4. CubePlayer Setup.msi

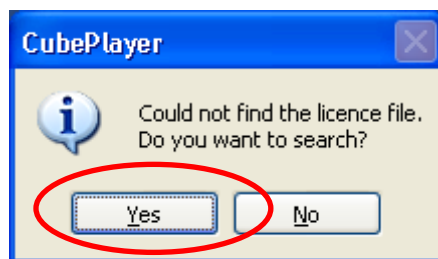
After successful installation Cube Player icon will appear on your desktop.



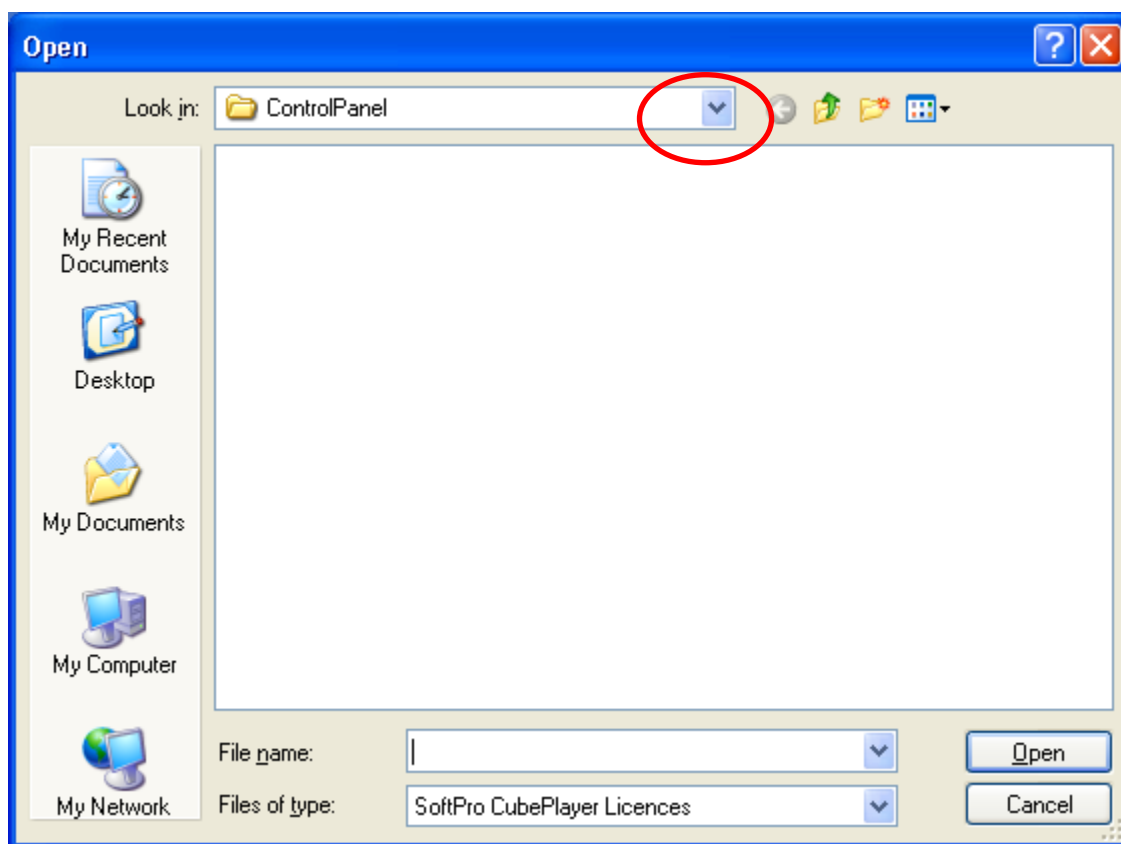
Cube Player desktop icon

## Registration procedures

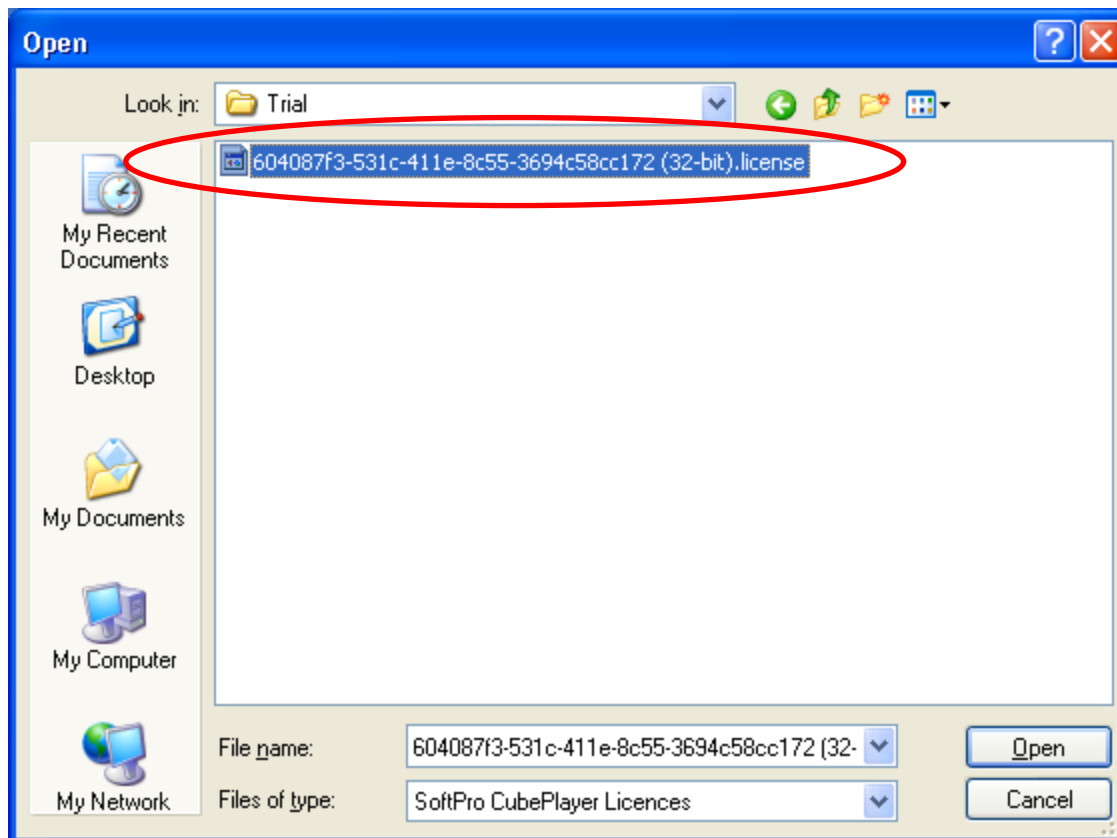
Select icon and run application. Immediately after you will see the following picture:



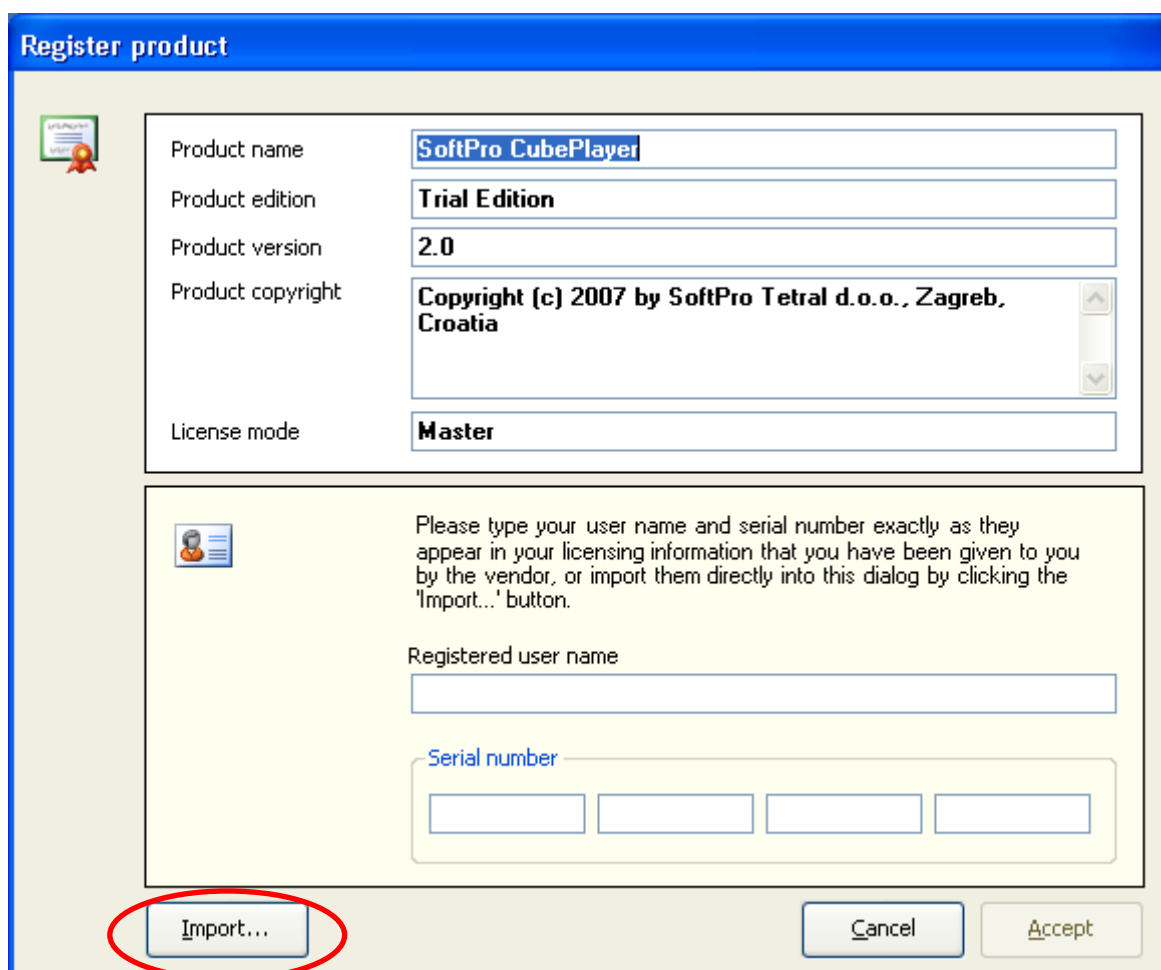
Select **Yes** to continue.



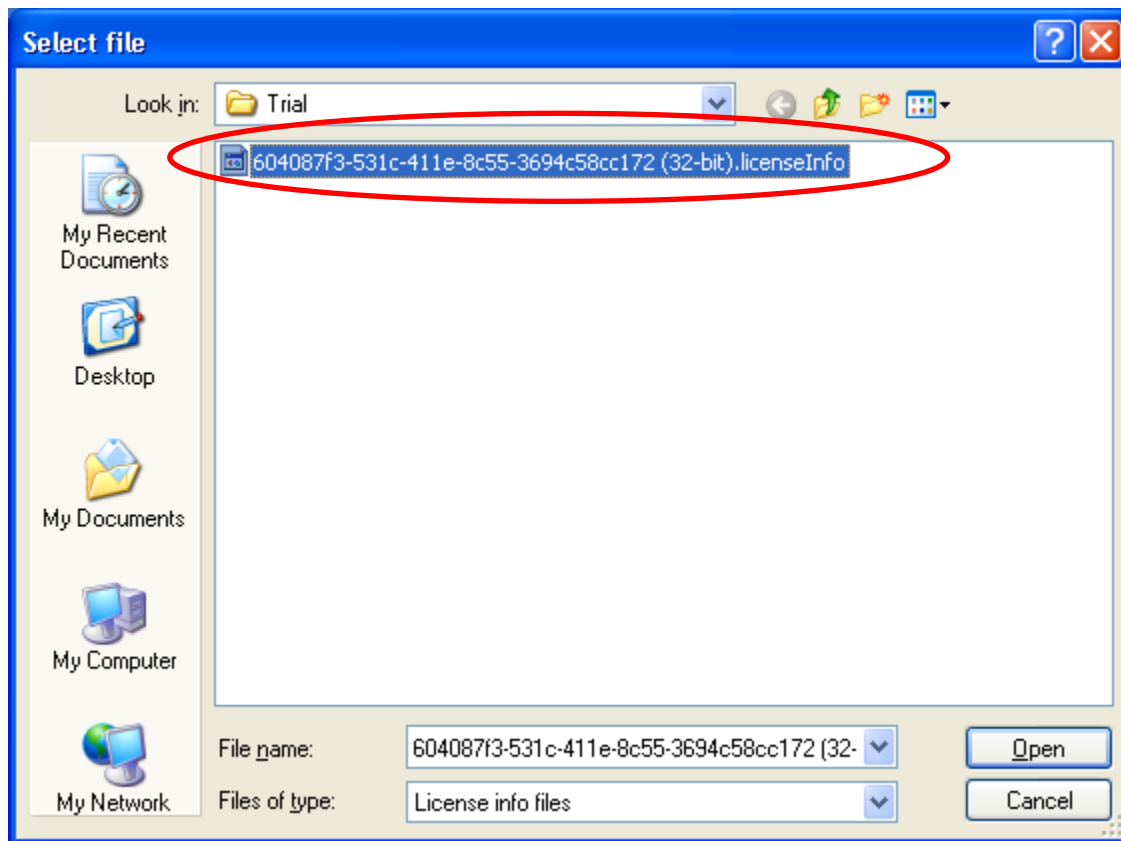
Now, navigate to the place where you have unpacked license folder **Trial**.



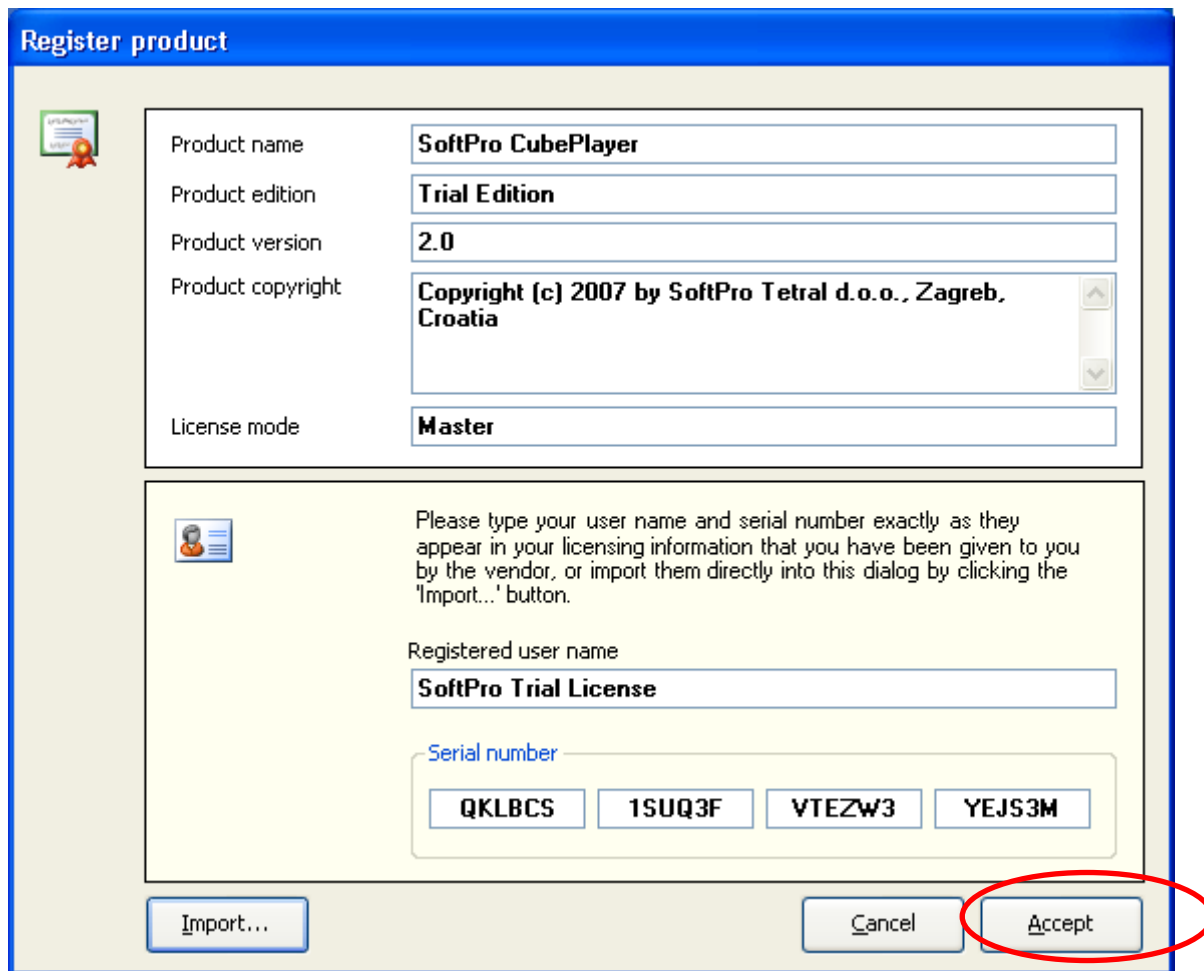
Select appropriate license (32-bit) or (64-bit).



Now select button **Import ...** in a lower left corner. CubePlayer will automatically take you to your license info file.



Select that file and select **Open**.



The 'Register product' dialog box contains the following fields and controls:

- Product name:** SoftPro CubePlayer
- Product edition:** Trial Edition
- Product version:** 2.0
- Product copyright:** Copyright (c) 2007 by SoftPro Tetral d.o.o., Zagreb, Croatia
- License mode:** Master
- Registered user name:** SoftPro Trial License
- Serial number:** QKLBCS, 1SUQ3F, VTEZW3, YEJS3M
- Buttons:** Import..., Cancel, and Accept (circled in red).

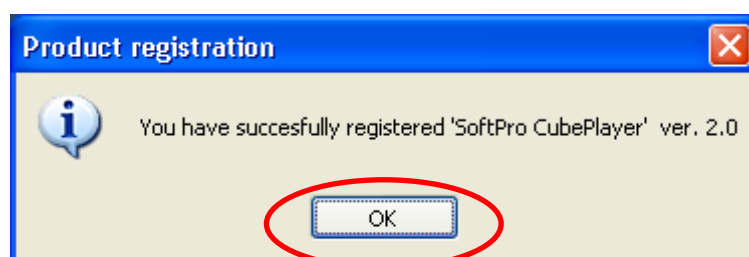
Typically, you will get a so-called 'demo' license file intended for the testing purposes. This is full functional version of CubePlayer Enterprise edition licensed in a Master mode.

Validity is 60 days since registration.

The application must be able to read data from and write data back into this license file. The file is always located in

C:\Documents and Settings\USER.NAME\My Documents\.CubePlayer.Client\CPLicenses

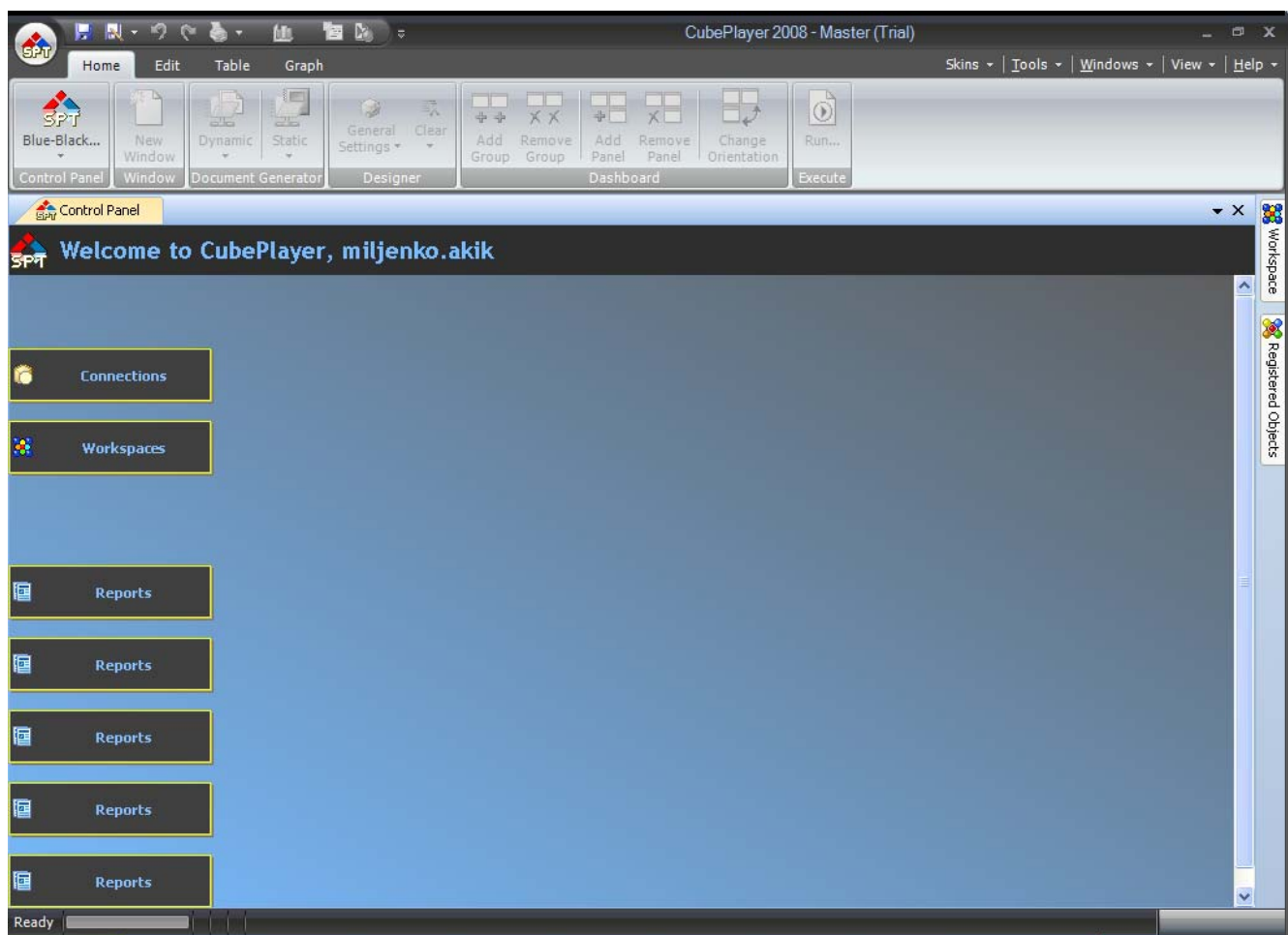
After selecting Accept new dialog will appear



Confirm selecting **Ok**.



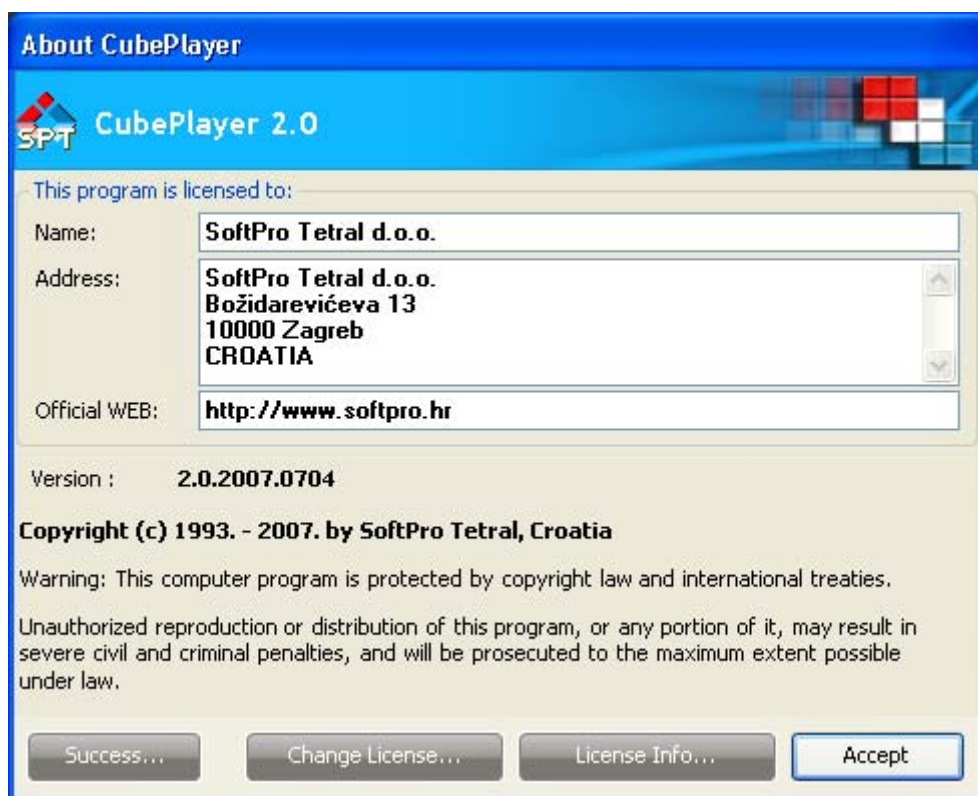
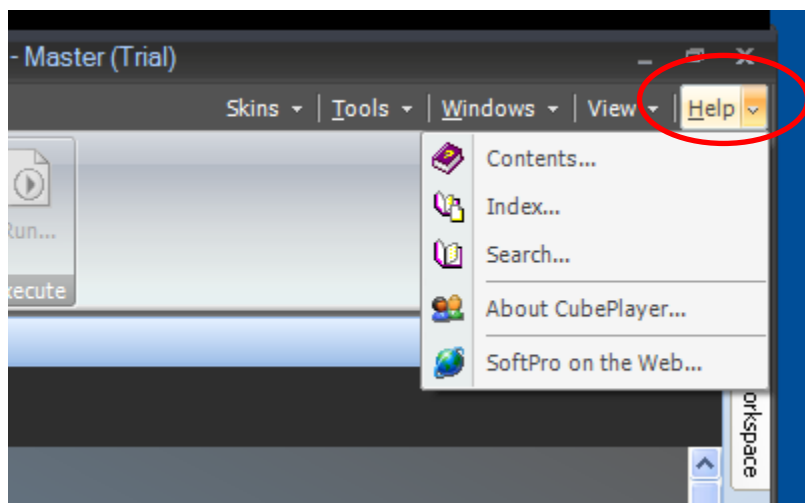
CubePlayer Trial Version Splash screen will appear, and little bit after Application itself.





## Viewing the contents of your license file

To see the contents of your license file, open the About CubePlayer dialog inside Main menu Help item



and click on the **License Info...** button to open the license dialog is shown in the following picture:

## License information



### SoftPro CubePlayer

License ID:	604087f3-531c-411e-8c55-3694c58cc172
License created:	29. lipanj 2007
License type:	Trial license
License registration date:	Not registered
License expiration date:	Not registered
License mode:	Master license

Product ID:	c2992e42-4ca7-432f-9c22-fe54fe97795d
Product edition:	Trial edition
Product version:	2.0
Product description:	CubePlayer is a member of the... ^ v
Product copyright:	Copyright (c) 2007 by SoftPro Tetral d.o.o., Zagreb, Croatia ^ v

Vendor name:	SoftPro Tetral d.o.o.
Vendor address:	SoftPro Tetral d.o.o. Božidarevićeva 13 10000 Zagreb CROATIA ^ v
Vendor official WEB:	<a href="http://www.softpro.hr">http://www.softpro.hr</a>

Close